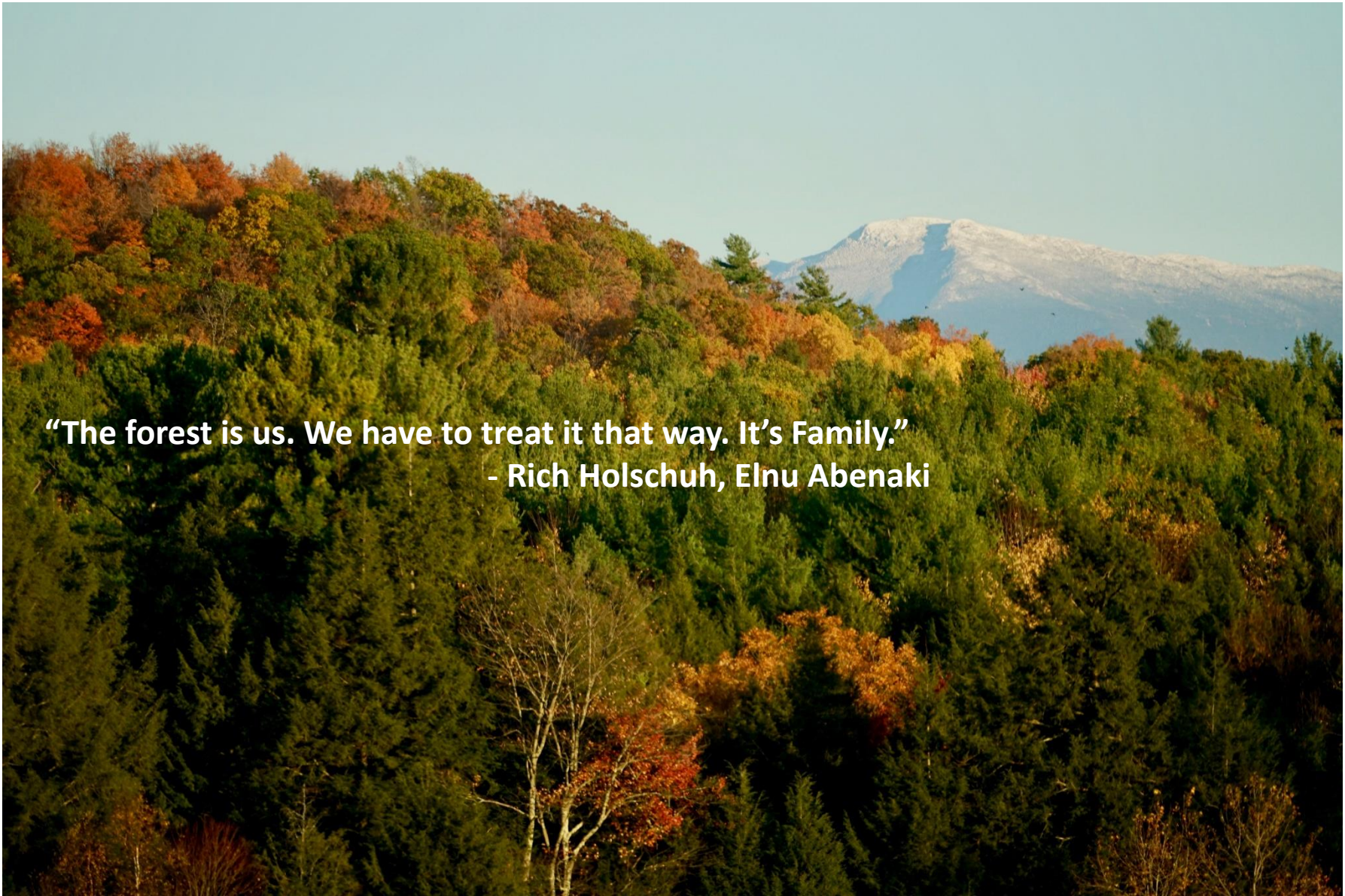


**Modernizing UVA for the 21st Century:
*Unleashing the full potential of our forests and wetlands
for clean water, biodiversity, carbon storage,
and climate resilience***



**Zack Porter
Lake Champlain Lakekeeper
Conservation Law Foundation**



**“The forest is us. We have to treat it that way. It’s Family.”
- Rich Holschuh, Elnu Abenaki**

Conservation Law Foundation forges lasting solutions to environmental challenges for the people of New England.

For 50 years, CLF has taken on powerful opponents who would pollute our air and water and squander our resources. Our deep local knowledge, legal acumen, and policy expertise make CLF a prime mover in building our clean energy future, countering climate change, and safeguarding our communities. We never give up and go home because we are home.



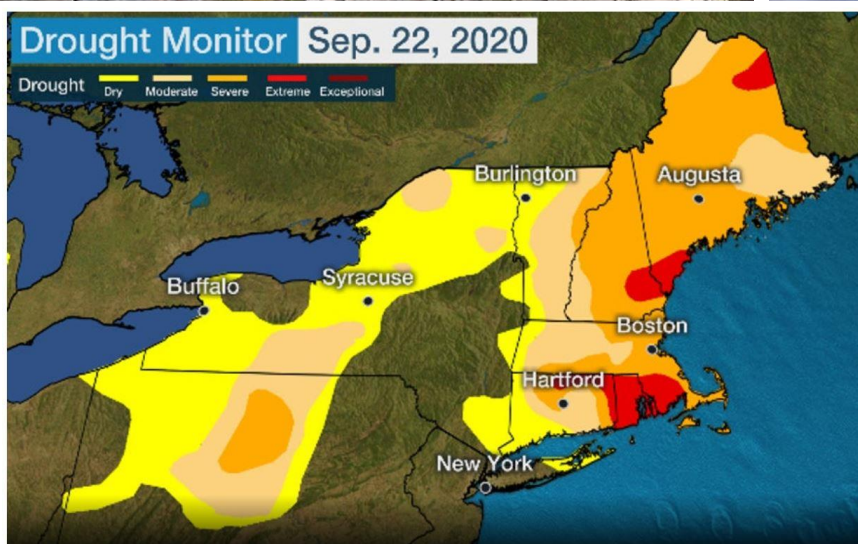
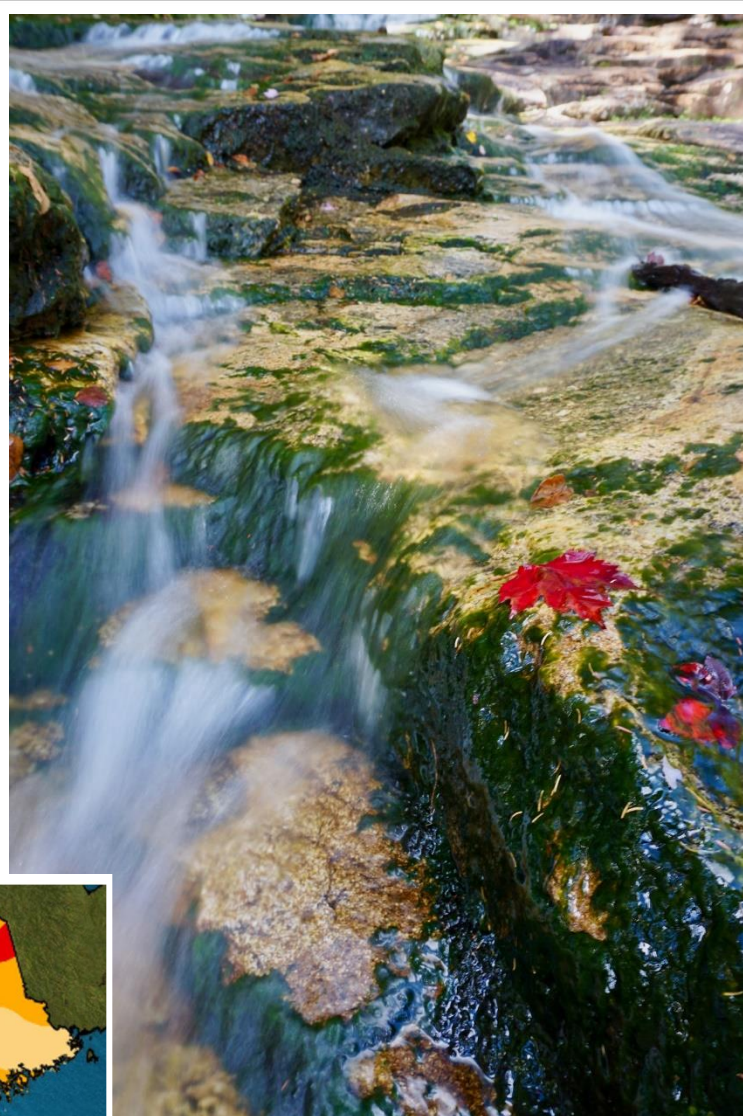








Source: VT Fish and Wildlife





VERMONT CONSERVATION DESIGN

PART 2: NATURAL COMMUNITIES AND HABITATS TECHNICAL REPORT



Natural Solutions

VERMONT OFFICIAL STATE WEBSITE

STATE OF VERMONT
Agency of Administration

ADMINISTRATIVE BULLETINS REVENUE AND ECONOMY FISCAL TRANSPARENCY STRATEGIC PLAN WORKERS' COMPENSATION

Home
COVID-19 Informational Resources
Secretary & Central Office
Agency Departments
Administrative Bulletins
Revenue and Economy
Fiscal Transparency
Strategic Plan
Public Information, Meetings and Reports
Vermont Climate Council
Membership

VERMONT CLIMATE COUNCIL
Pursuant to [Act 153 of 2020](#) (Global Warming Solutions Act (GWSA))
[Supporting Documents](#)
[Membership](#)
Meetings
[Meetings](#) are held via Microsoft Teams and [recorded](#). Public members are asked to follow proper [etiquette](#) when using Microsoft Teams.
Full Council
Steering Committee
Subcommittees:
• [Agriculture and Ecosystems Subcommittee](#)

Phosphorus TMDLs for Vermont Segments of Lake Champlain

June 17, 2016

clf

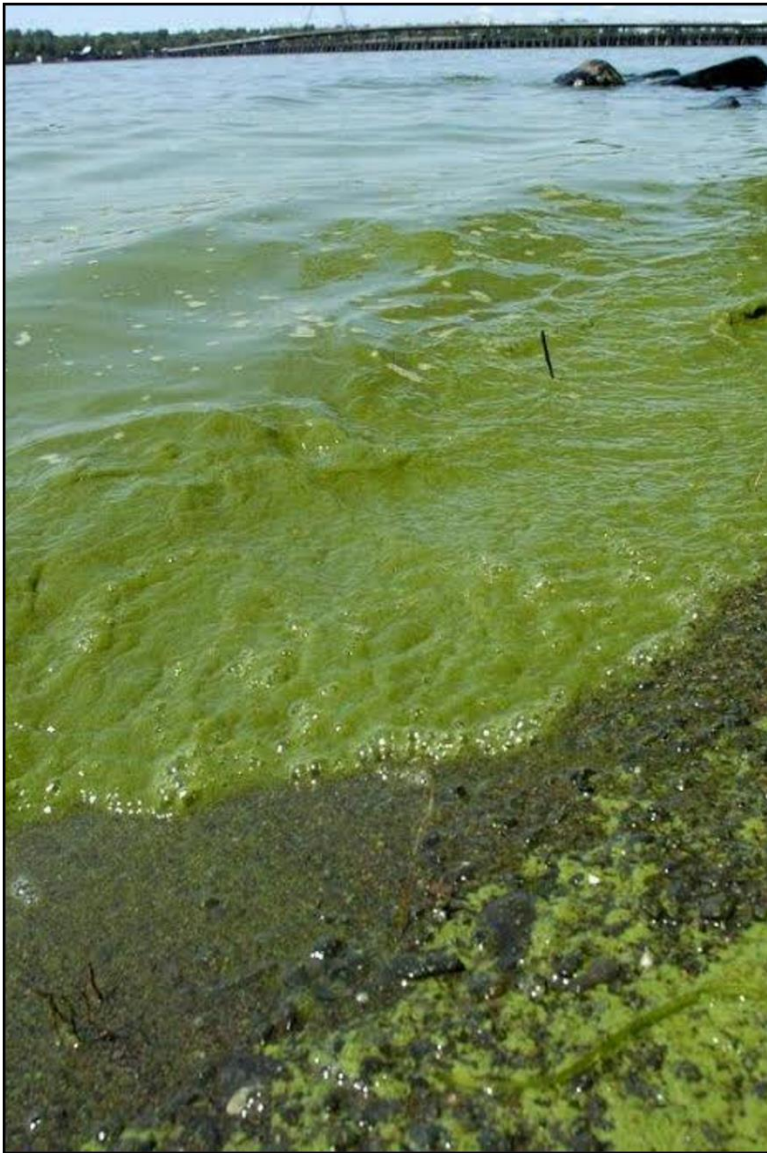
conservation law foundation



2018 Vermont State Hazard Mitigation Plan

*Making Vermont safer and more resilient in the
face of climate change and natural disasters*

For a thriving New England

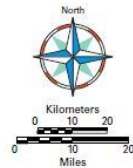
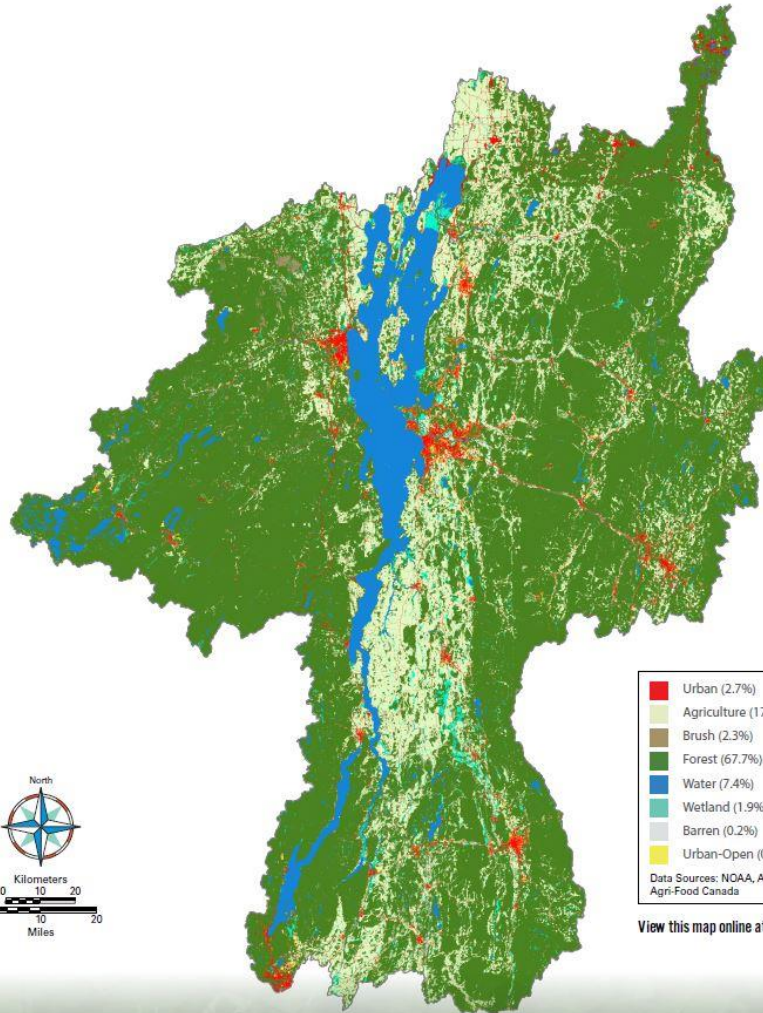




PEOPLE & ECONOMY
Land Cover



Lake Champlain
Basin Atlas



Urban (2.7%)
Agriculture (17.0%)
Brush (2.3%)
Forest (67.7%)
Water (7.4%)
Wetland (1.9%)
Barren (0.2%)
Urban-Open (0.8%)

Data Sources: NOAA, Agriculture and Agri-Food Canada

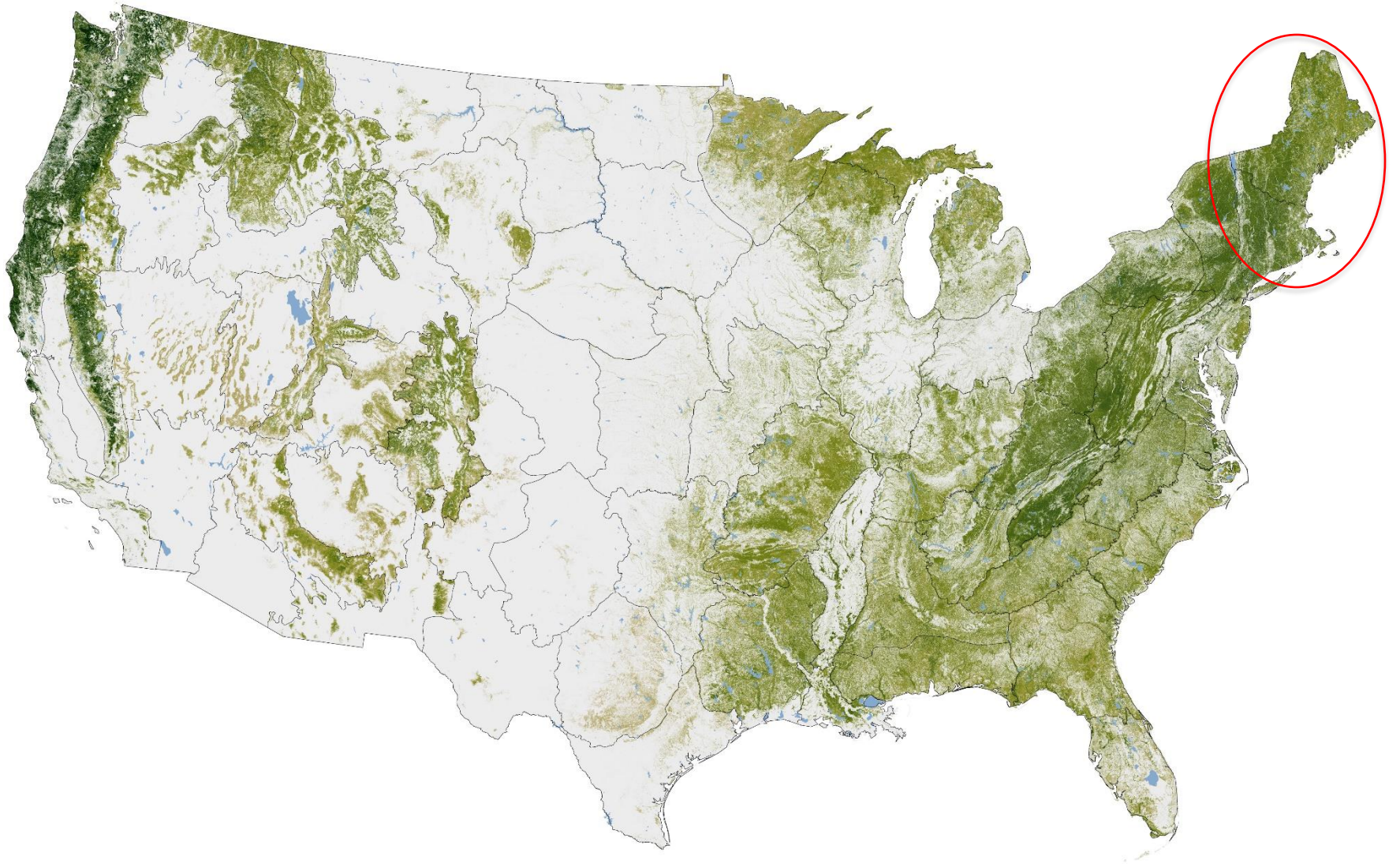
View this map online at atlas.lcbp.org



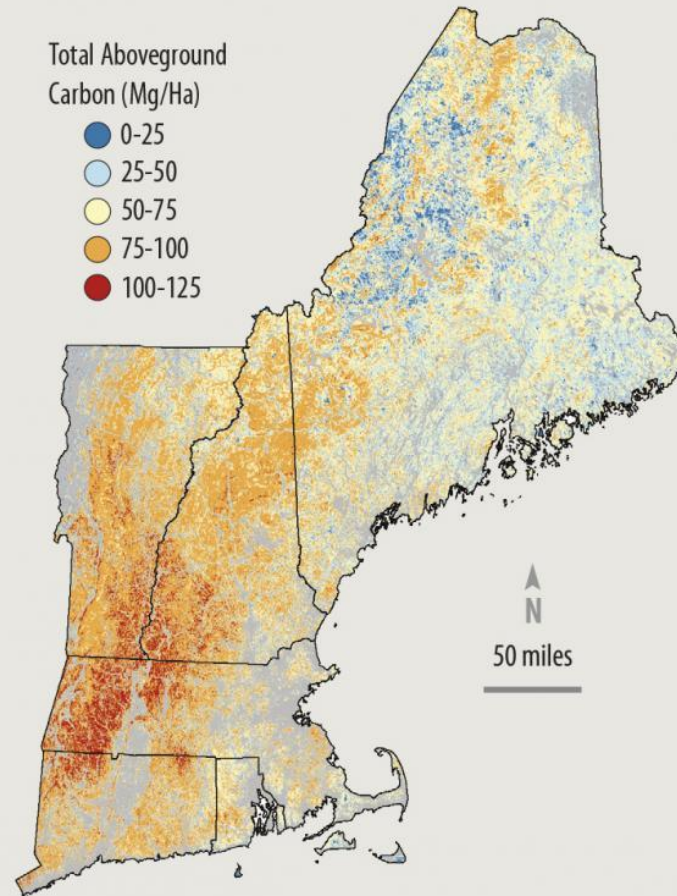








Forests Store Carbon



New England's forests provide a vast store-house of carbon that helps mitigate global climate change. Variation in the amounts of carbon, wood, and the size of trees across the region is largely due to the history of timber harvesting. Data are not represented for gray areas that are predominantly agricultural or densely populated.



NORTHEAST WILDERNESS TRUST
FOREVER-WILD
 CONSERVATION IN CONTEXT
 ALL CONSERVED LAND



WILDERNESS OF THE CONTINENTAL UNITED STATES

clf

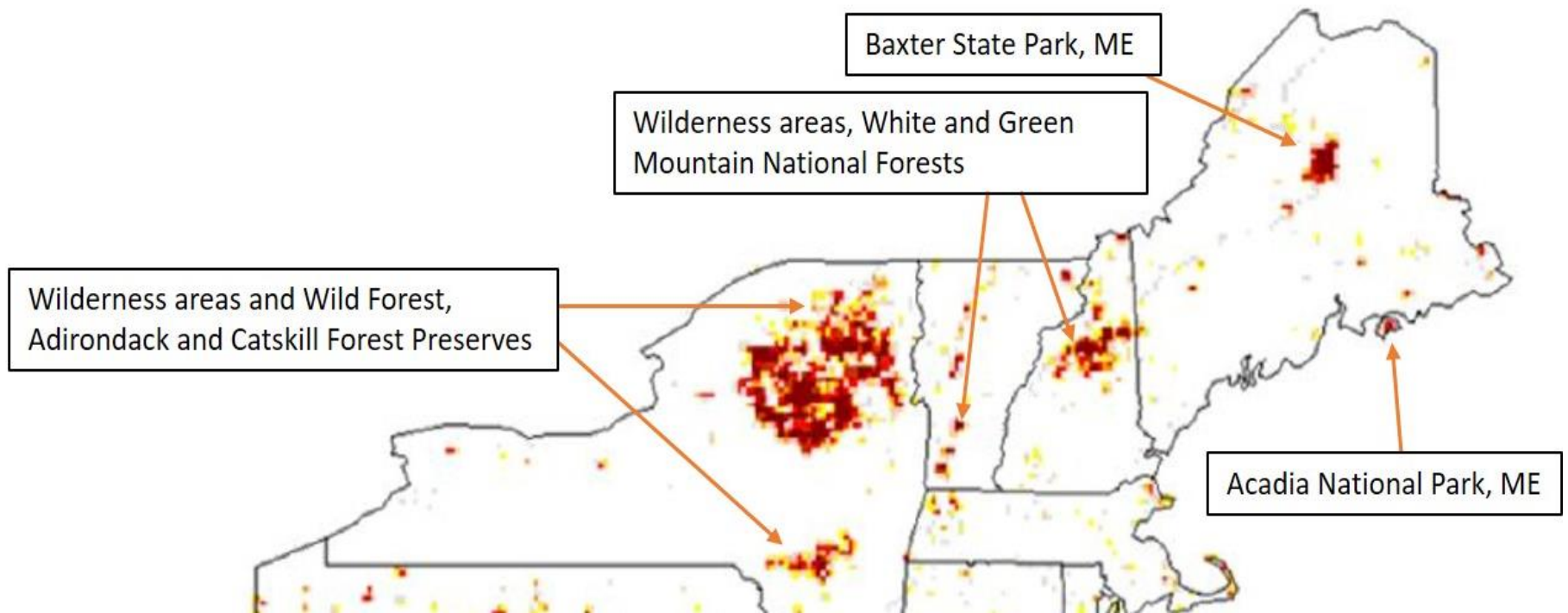
conservation law foundation

For a thriving New England



NORTHEAST WILDERNESS TRUST
FOREVER-WILD
 CONSERVATION IN CONTEXT
 WILDERNESS LAND





30% of *all* aboveground carbon in the Northeastern US is stored in just **5%** of the land area

From "A Contemporary Carbon Balance for the Northeast Region of the United States." (Lu et al 2013)







Thanks

Zack Porter
zporter@clf.org
802.552.0160